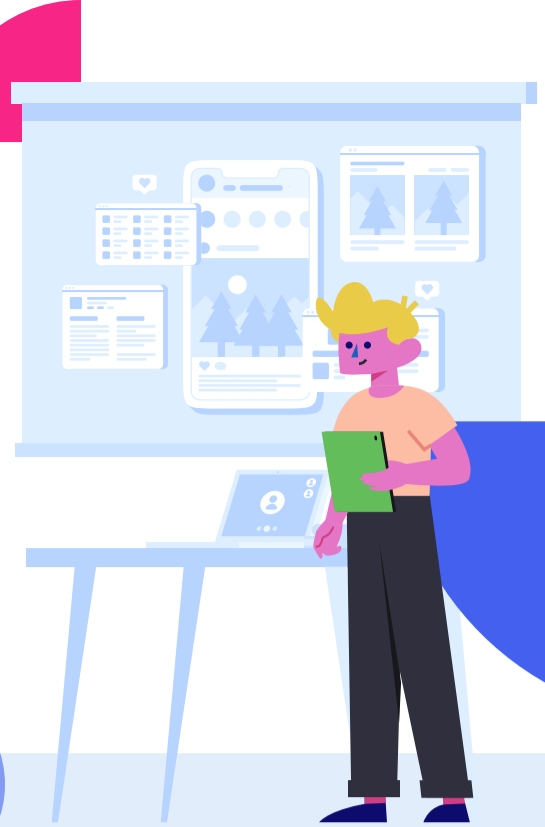


Does Automated Feedback on Spelling and Grammar Support Student Writing?

This study examines whether adding spelling and grammar checkers, in addition to formative writing strategy feedback, supports writing and revision processes for high school students



Effective Writing Support: What does the Research Say?



1. The **most effective** means of improving writing: instruction on writing strategies for **planning**, **drafting**, and **revising**



2. Writing support needs to be **comprehensive**, including organization, voice, genre conventions, grammar, punctuation, and spelling



3. Provide students with interactive **model-practice-reflect** instructional cycles and use **formative feedback**



4. Provide developing writers with **actionable** and **intentional procedures** and **tools** for a variety of writing tasks



5. Engage writers in **deliberate practice** with strategies and receive feedback



So, What's the role of spelling and grammar support?

Spelling and Grammar Feedback



1. The salience and impact of mechanical errors depend on the audience and assessment



2. Can be especially helpful for elementary school students



3. Some research says grammar instruction had a reliably negative impact on writing performance (Graham & Perin, 2007)

Automated Writing Evaluation and Feedback



1. May increase writers' motivation and confidence



2. Allows one-on-one, rapid writing support



3. Research indicates that students find these tools helpful and are aware of their limitations (Bai & Hu, 2017)

Conclusions and Implications



4. Students may need instruction to use tools effectively



5. Use of such tools contributed to improvements in clarity and mechanical correctness, but did not contribute to substantive writing quality



6. Correcting a few spelling and grammar errors had little impact on overall essay quality

*Reference: McCarthy, K. S., Roscoe, R. D., Allen, L. K., Likens, A. D., & McNamara, D. S. (2022). Automated writing evaluation: Does spelling and grammar feedback support high-quality writing and revision? *Assessing Writing*, 52, 100608.*

Infographic developed by: Jiali Wang and Sasha Stone, University of California, Irvine